

CERTIFIED RECORD OF LAND CORNER MONUMENTATION

History of original corner establishment:
None

*

DIAGRAM
T17S R29E
S19
W1/16-----
S30

Description of corner evidence found:
None

Description of monument and accessories I establish to perpetuate the original location of this corner:

Set a 3/4x28" aluminum monument 20" in the ground in a mound of stone.

T17S R29E
S19

I establish new bearing trees:

W1/16-----

A 4" P.Pine bears S56 1/4°E, 15.4 ft, scribed XBT.

S30

An 8" P.Pine bears N6-3/4°E, 20.8 ft, scribed W1/16S19BT.

PLS1918
1988

New BTs have 3/4" brass washers marked PLS1918 attached to the BT blaze, faces and bands painted with red tree marking paint, and BT tags and Attention or Land Survey Monument signs. A steel fence post with Attention or Land Survey Monument sign is driven approximately 3-5 feet from the corner.

Smokey Cadastral Survey, Cont. No. 53-04H1-7-4011

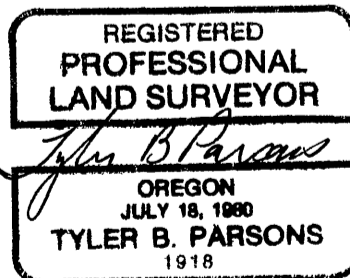
Field Book: 4-4

Work accomplished: 7/2/88

Witnesses: Tyler Parsons
Douglas Parsons

Job No.: 87226

PARSONS SURVEYING
1915 S.E. Stone Street
Corvallis, OR 97333
(503) 752-7515



Office of COUNTY SURVEYOR

County of GRANT

State of OREGON, I hereby certify that the within instrument was filed in this office for record on the 4 day of Nov, 19 88

Robert D. Lutz by _____
(COUNTY OFFICIAL) (DEPUTY)